



Apartment 4 Douglas Head Apartments, Douglas, Isle Of Man,
IM1 5BY

Asking Price £495,000

- Luxury ground floor apartment with panoramic views across Douglas Bay
- Bright reception room with direct access onto the terrace
- Secure allocated parking space plus the benefit of a private garage
- Prime coastal position within the sought-after Douglas Head Apartments development
- Modern fitted kitchen with integrated appliances and sea views
- Stunning wrap-around sun terrace ideal for relaxing and entertaining guests
- Two double bedrooms, including principal bedroom with en-suite shower room



Apartment 4 Douglas Head Apartments is a superb luxury ground floor apartment occupying one of Douglas' most sought-after coastal positions, enjoying panoramic sea views across Douglas Bay and the surrounding coastline. Offering beautifully presented accommodation throughout, the property combines modern living with an exceptional outdoor entertaining area, making it a rare opportunity within the local apartment market.

A particular feature of the property is the impressive wrap-around sun terrace which takes full advantage of the spectacular outlook. The terrace provides a wonderful space for outdoor dining, entertaining guests or simply relaxing whilst enjoying the ever-changing views across the bay. Further benefits include a secure allocated parking space together with the advantage of a private garage, a highly desirable feature in this location.

The accommodation is accessed via a welcoming entrance hallway which leads into the main hallway, providing access to all rooms. The impressive reception room is flooded with natural light from large windows and glazed doors which frame the outstanding sea views. Double doors open directly onto the sun terrace, seamlessly connecting the internal and external living spaces. The reception room also opens into the kitchen, creating a sociable layout ideal for modern living.

The kitchen is fitted with a comprehensive range of wall and base units complemented by integrated appliances and preparation space. Positioned to enjoy the coastal outlook, it provides both functionality and style.

There are two generous double bedrooms, both enjoying stunning sea views. The principal bedroom benefits from an en-suite shower room, whilst the second bedroom is served by a well-appointed family bathroom. A useful utility cupboard houses the washer dryer and electric boiler.

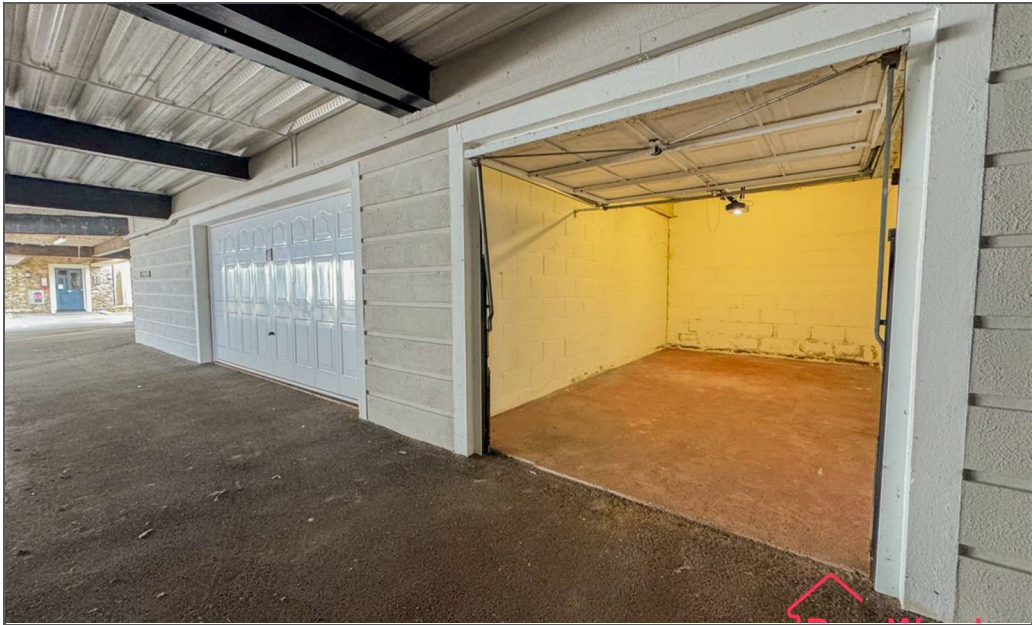
One of the most remarkable aspects of Apartment 4 is that every principal room enjoys a sea view, creating a wonderful sense of space.















GROUND FLOOR

Not to scale-for identification purposes only
Made with Metropix ©2026



DOUGLAS

37 VICTORIA STREET
DOUGLAS
ISLE OF MAN IM1 2LF

T 01624 620606

F 01624 677363

E info@deanwood.co.im

CASTLETOWN

COMPTON HOUSE
9 CASTLE STREET CASTLETOWN
ISLE OF MAN IM9 1LF

T 01624 825995

F 01624 825996

E castletown@deanwood.co.im

RAMSEY

LEZAYRE HOUSE
87 PARLIAMENT STREET
RAMSEY ISLE OF MAN IM8 1AQ

T 01624 816111

F 01624 816588

E ramsey@deanwood.co.im

These particulars are for information purposes only. They do not constitute or form any contract nor should any statement contained herein be relied upon as a representation of fact. Neither the vendor nor DeanWood Agencies Limited ('the firm'), nor any officer or employee of the firm accept liability or responsibility for any statement contained herein. The vendor does not by these particulars, nor does the firm, nor does any officer or any employee of the firm have any authority to make or give any representation or warranty whatsoever as regards the property or otherwise. It is the sole responsibility of any person interested in the property described in these particulars to make all proper enquiries and searches to verify the description of the property and all other particulars herein.

FOR MORE PROPERTIES VISIT OUR WEBSITE @ deanwood.im